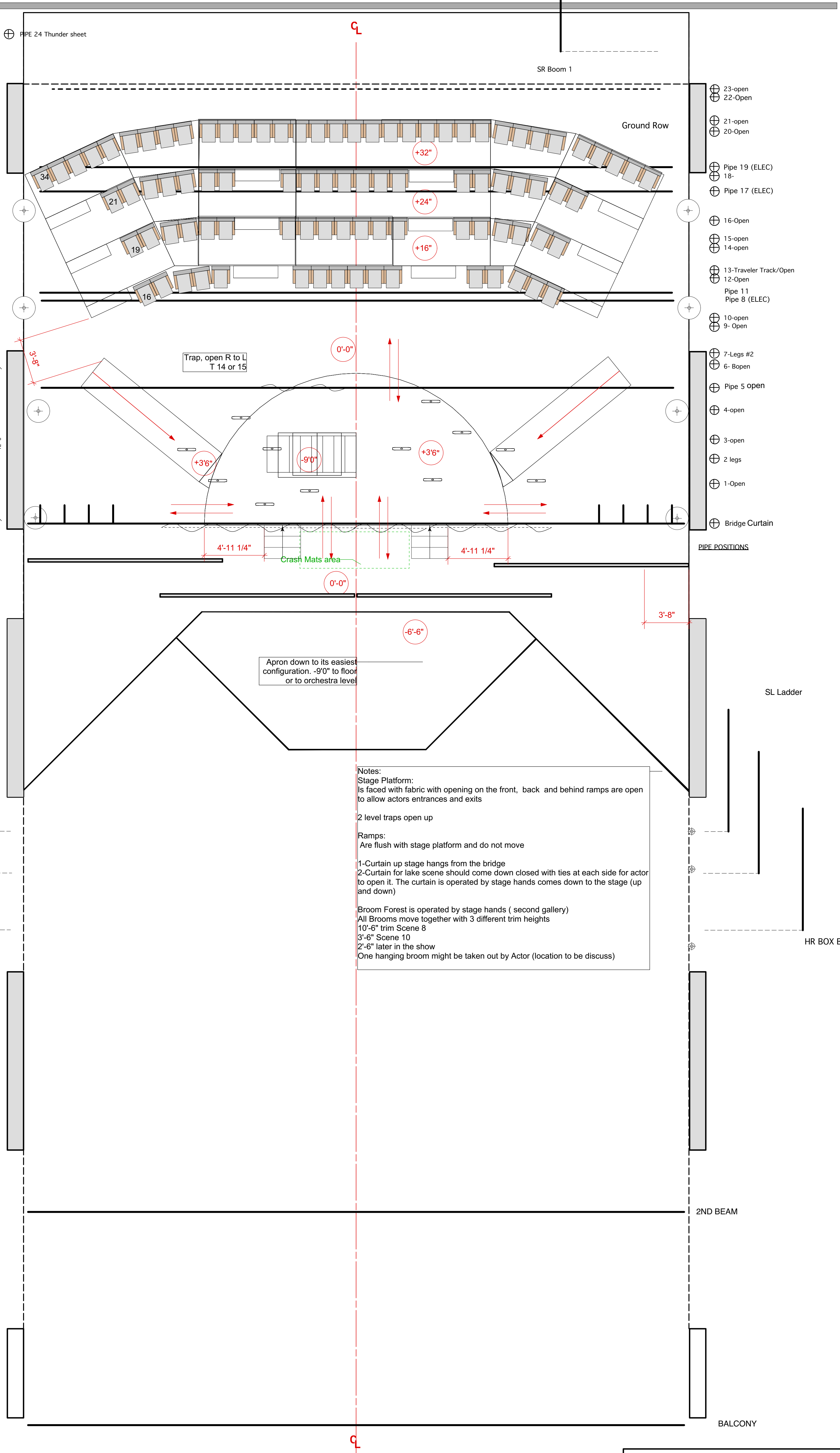


1 2 3



- ⊕ 23-open
- ⊕ 22-Open
- ⊕ 21-open
- ⊕ 20-Open
- ⊕ Pipe 19 (ELEC)
- ⊕ 18-
- ⊕ Pipe 17 (ELEC)
- ⊕ 16-Open
- ⊕ 15-open
- ⊕ 14-open
- ⊕ 13-Traveler Track/Open
- ⊕ 12-Open
- ⊕ Pipe 11
- ⊕ Pipe 8 (ELEC)
- ⊕ 10-open
- ⊕ 9- Open
- ⊕ 7-Legs #2
- ⊕ 6- Bopen
- ⊕ Pipe 5 open
- ⊕ 4-open
- ⊕ 3-open
- ⊕ 2 legs
- ⊕ 1-Open
- ⊕ Bridge Curtain

PIPE POSITIONS

Notes:
 Stage Platform:
 Is faced with fabric with opening on the front, back and behind ramps are open to allow actors entrances and exits
 2 level traps open up
 Ramps:
 Are flush with stage platform and do not move
 1-Curtain up stage hangs from the bridge
 2-Curtain for lake scene should come down closed with ties at each side for actor to open it. The curtain is operated by stage hands comes down to the stage (up and down)
 Broom Forest is operated by stage hands (second gallery)
 All Brooms move together with 3 different trim heights
 10'-6" trim Scene 8
 3'-6" Scene 10
 2'-6" later in the show
 One hanging broom might be taken out by Actor (location to be discuss)

Apron down to its easiest configuration. -9'0" to floor or to orchestra level

Trap, open R to L T 14 or 15

Crash Mats area

SR Ladder

SL Ladder

HL BOX BOOMS

HR BOX BOOMS

2ND BEAM

BALCONY

Show Name Vatzlav by Mrozek		
Reference Lily Witsitt	Drawn By M. Oteiza	Date 04/02/14
CAD File Name CFA Theater		SCALE: 1/4" = 1'-0"

1 2 3